

SC-X7R302L

用途 Application:

PME-MLCC 介质瓷粉

Dielectric Powders for PME-MLCC

瓷料特性 Features:

- 材料体系: BaTiO₃
Material System: BaTiO₃
- 瓷料符合 EIA X7R 特性
Meets EIA X7R specification
- 空气中烧结, 烧结温度 1100°C
Sinter in air. Sintering temperature is 1100°C
- 介电常数: K=2950±150
Dielectric constant: K=2950±150
- 分散性好
Good dispersion
- 环保型瓷料, 符合欧盟 RoHS 指令
Environment friendly, RoHS compliant

物理特性 Typical Physical Properties

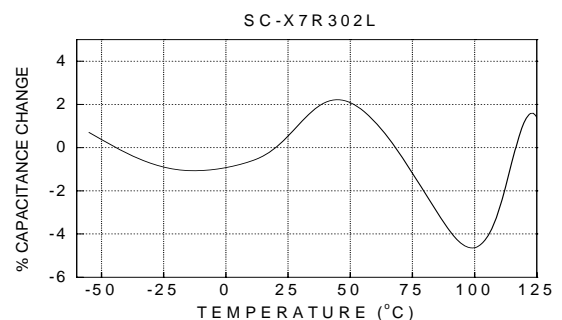
Density (g/cm ³)	≧3.8
Surface Area (m ² /g)	1.5~2.8
Particle Size (μ m)	D ₁₀ 0.29
	D ₅₀ 0.53
	D ₉₀ 1.87
Moisture Content (120°C/5min)	≧0.3%
L.O.I (1100°C/1hr)	<0.2%

粉体 PSD 曲线 Powders PSD curve

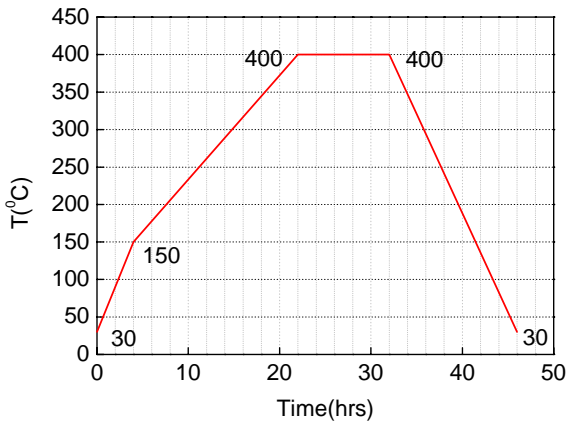
MLCC 电性能 Electrical Properties of MLCC

K (1KHz, 1V, 25°C)	2800~3100
DF (1KHz, 1V, 25°C)	<1.6%
IR (25°C, 100V _{DC})	>5 × 10 ¹⁰ Ω
TCC up to 125°C	±15% Δ C Max
BDV (25°C)	>1500V/mil

TCC 曲线 Typical Temperature Coefficient



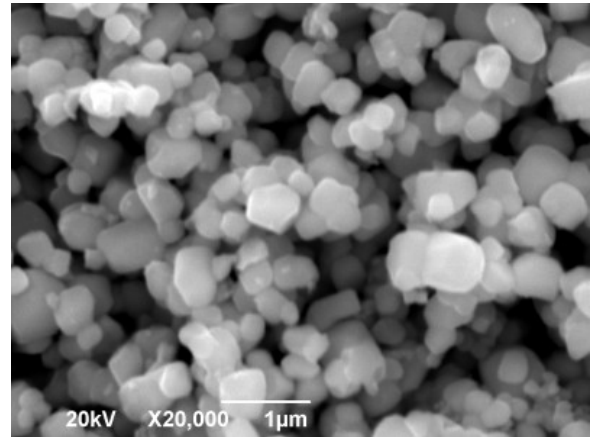
排胶曲线
Binder Burn-Out Curve



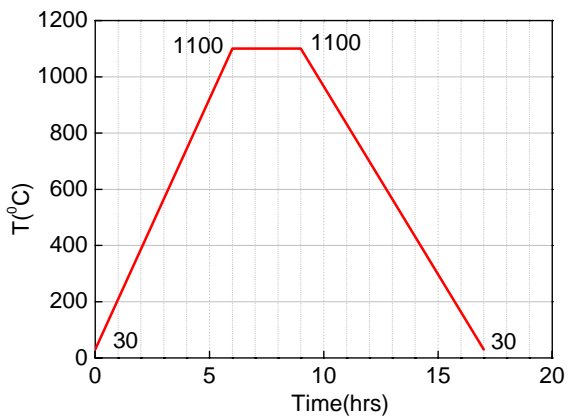
*PVB 粘合剂系统(PVB binder System)

*本曲线仅供参考(This curve is for reference only)

粉体 SEM 图
Powders SEM



烧结曲线
Sintering Curve



*本曲线仅供参考(This curve is for reference only)

MLCC 断面 SEM 图
MLCC Fracture Surface SEM

